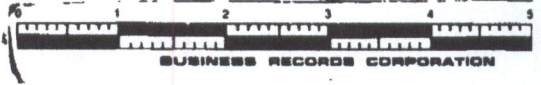
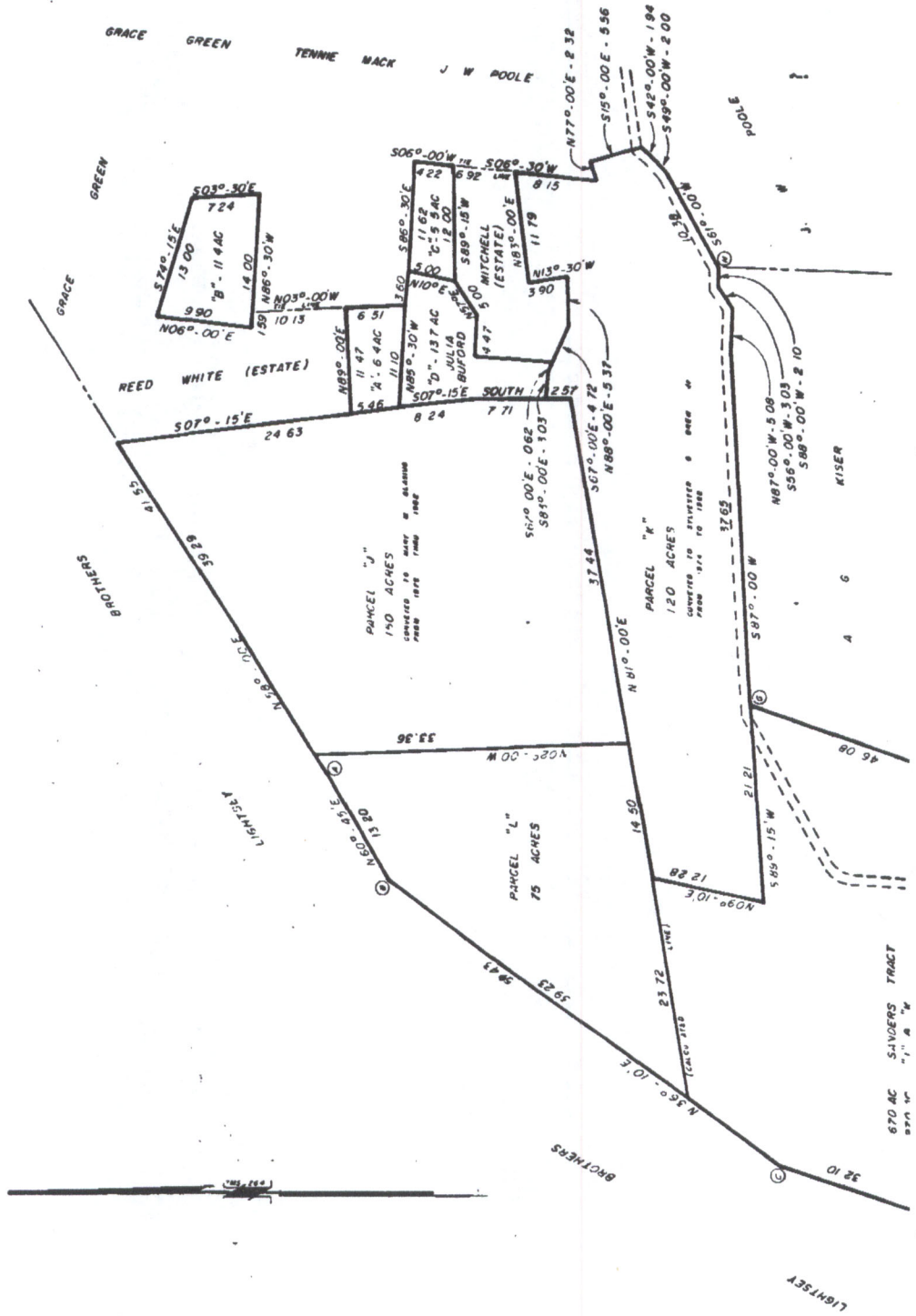
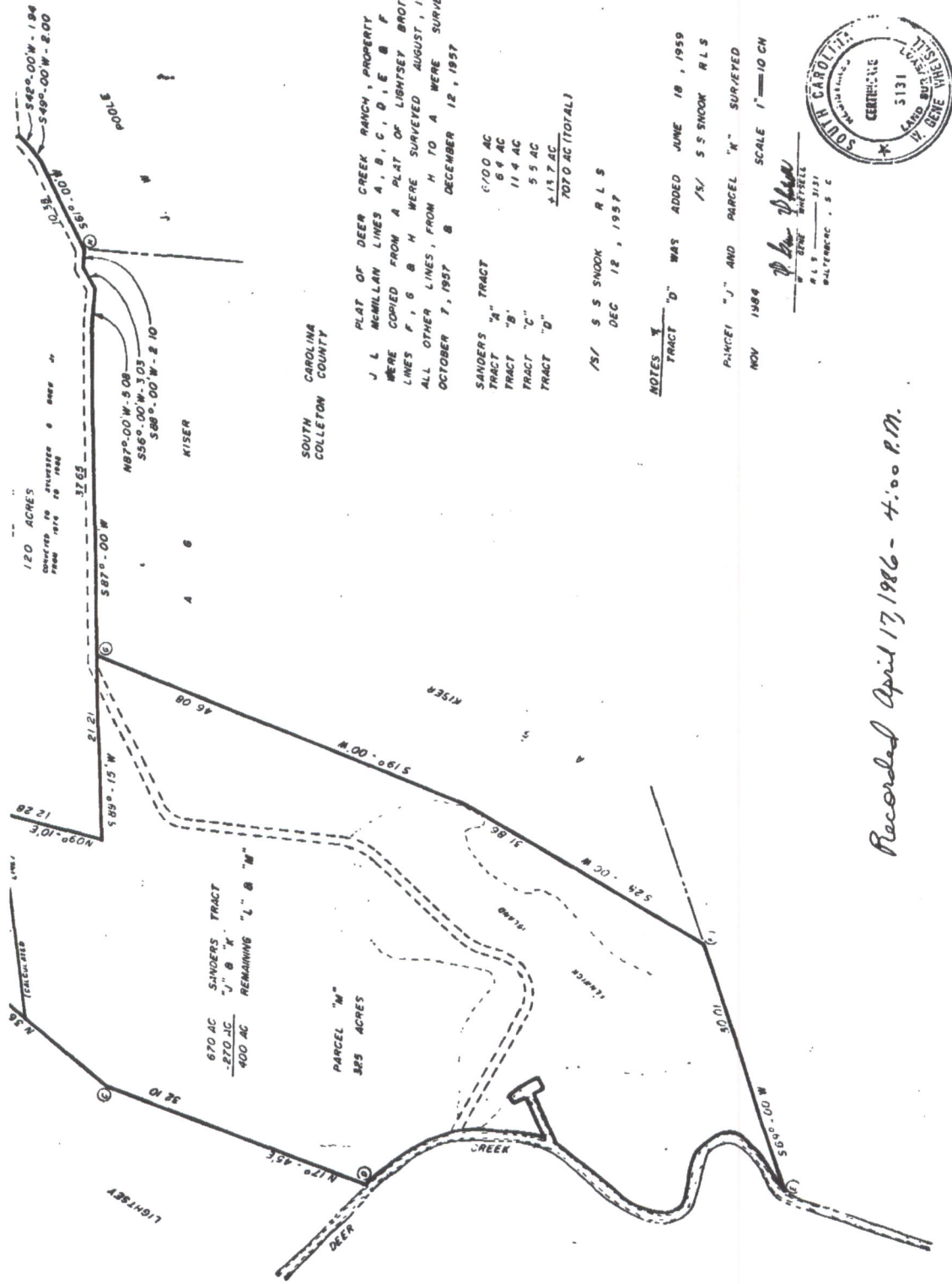


25-2

1 of 2



25-2  
2 of 2



ICORDS CORPORATION

SOUTH CAROLINA  
COLLETON COUNTY

PLAT OF DEER CREEK RANCH, PROPERTY OF  
J L McMILLAN LINES A, B, C, D, E & F  
WERE COPIED FROM A PLAT OF LIGHTSEY BROTHERS  
LINES F, G & H WERE SURVEYED AUGUST, 1956  
ALL OTHER LINES, FROM H TO A WERE SURVEYED  
OCTOBER 7, 1957 & DECEMBER 12, 1957

SANDERS TRACT	670 AC
TRACT "A"	64 AC
TRACT "B"	114 AC
TRACT "C"	55 AC
TRACT "D"	215.7 AC
	<u>700 AC (TOTAL)</u>

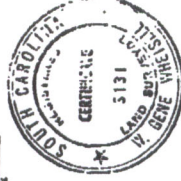
1/5/ S S SNOOK R L S  
DEC 12, 1957

NOTES

TRACT "D" WAS ADDED JUNE 18, 1959

PARCEL "J" AND PARCEL "K" SURVEYED  
NOV 1984

SCALE 1" = 10 CH



*W. Gene Watterberg*  
W. GENE WATTERBERG  
REGISTERED PROFESSIONAL ENGINEER  
LICENSE NO. 5131  
WATERBERG, S.C.

Recorded April 17, 1986 - 4:00 P.M.