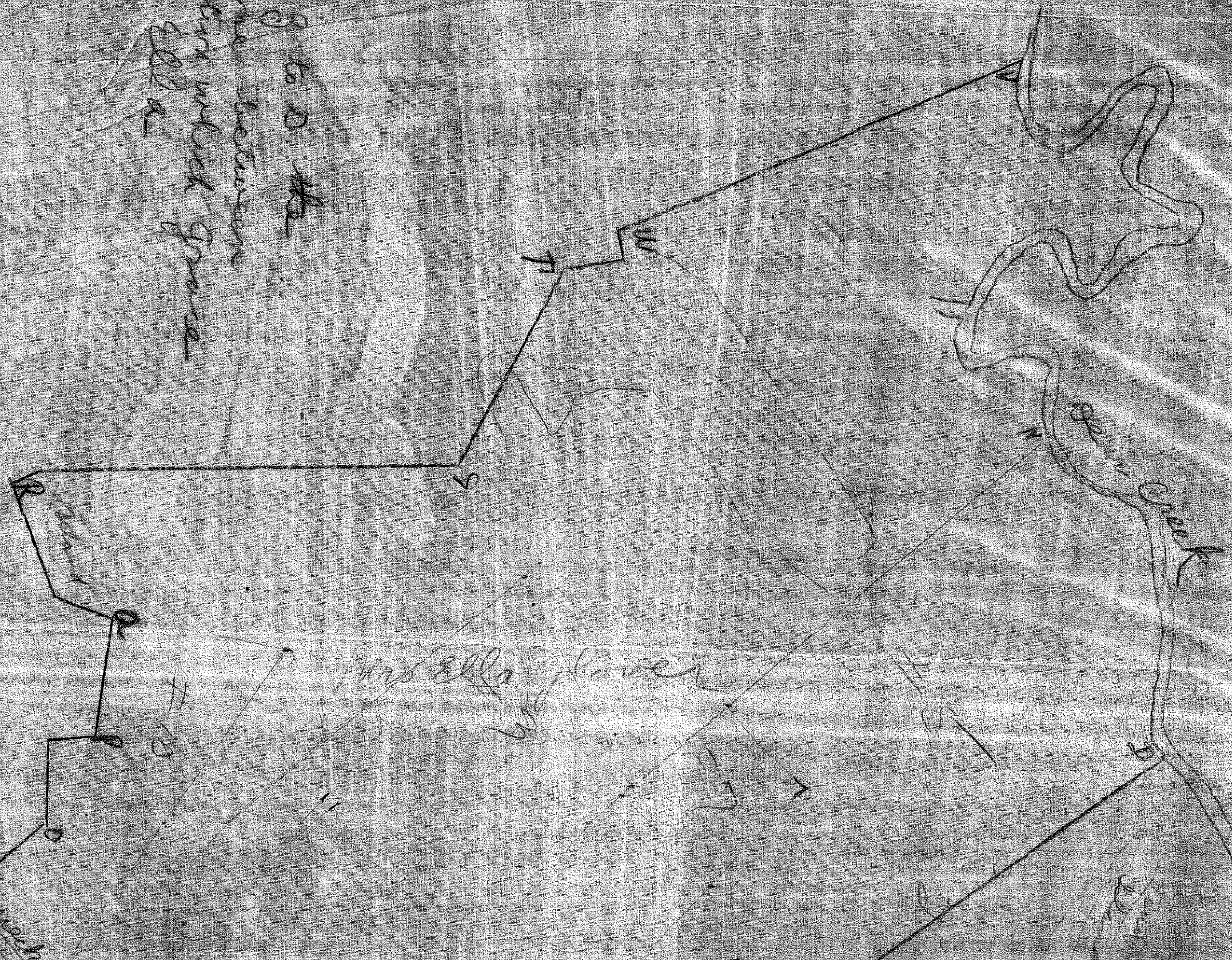
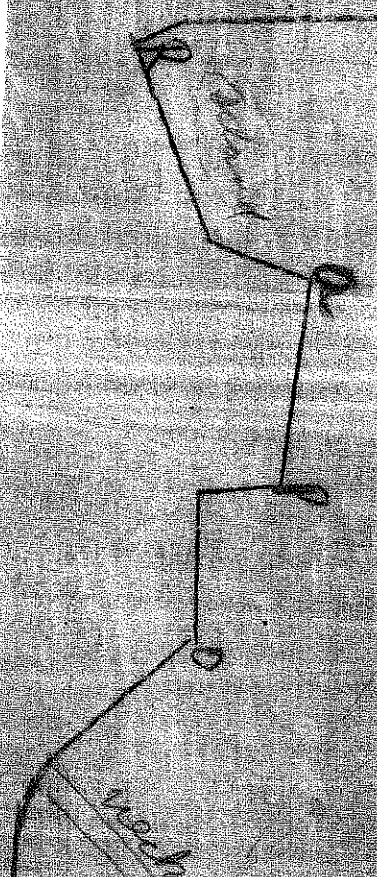


Plot of P. 13-15
plot 13-15

4000 to 5000 ft. the
distance between
points given in the
table



H. Finckens



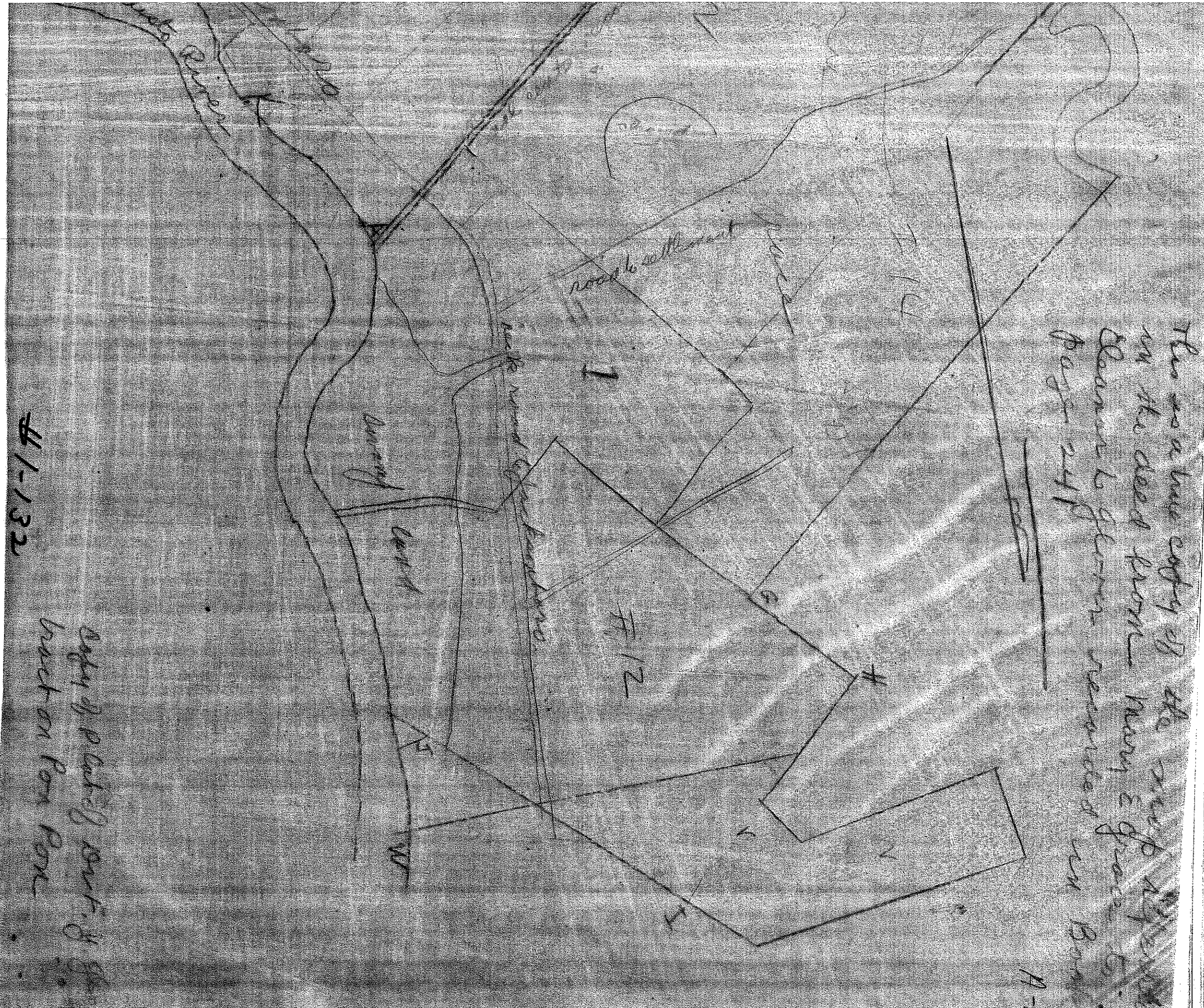
#1-132

copy
book



This is a true copy
 on the deed from
 Leonard's plan
 page 241

PLAT
 GOMBA



PLAT

of
 555 PLANTATION
 five Tracts as follows. One
 Walnut Hill and Two 50
 Acre Tracts. Containing in all
 about One Acre. It is Situated
 north of the Colleton
 lands from Combahee Falls
 to the Green Pond.
 by an actual Survey
 with McIver Co. of
 has such Form, Mark
 lines as are delineated
 Plat
 701 signed A. J. Lemack's
 Surveyor